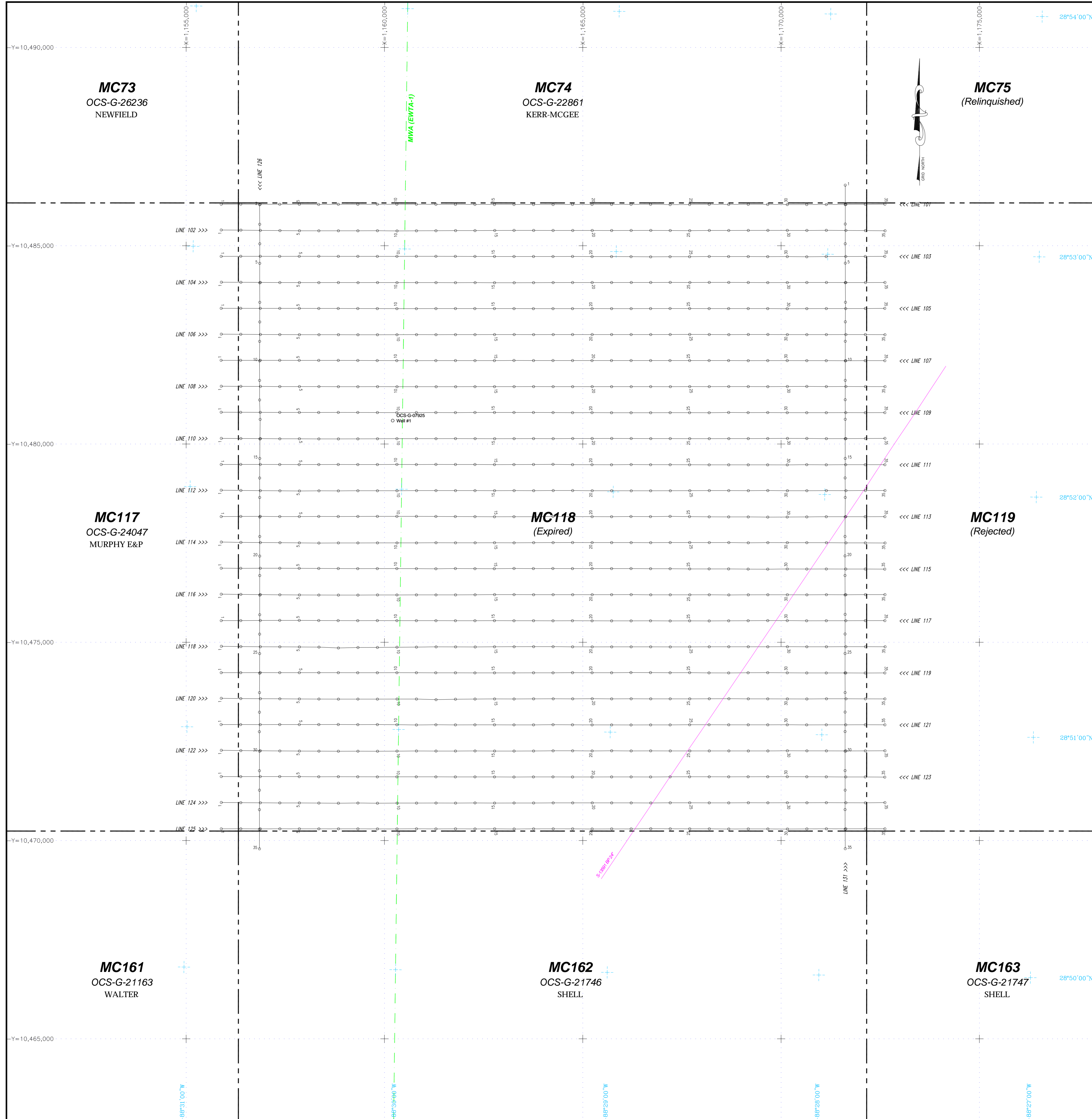
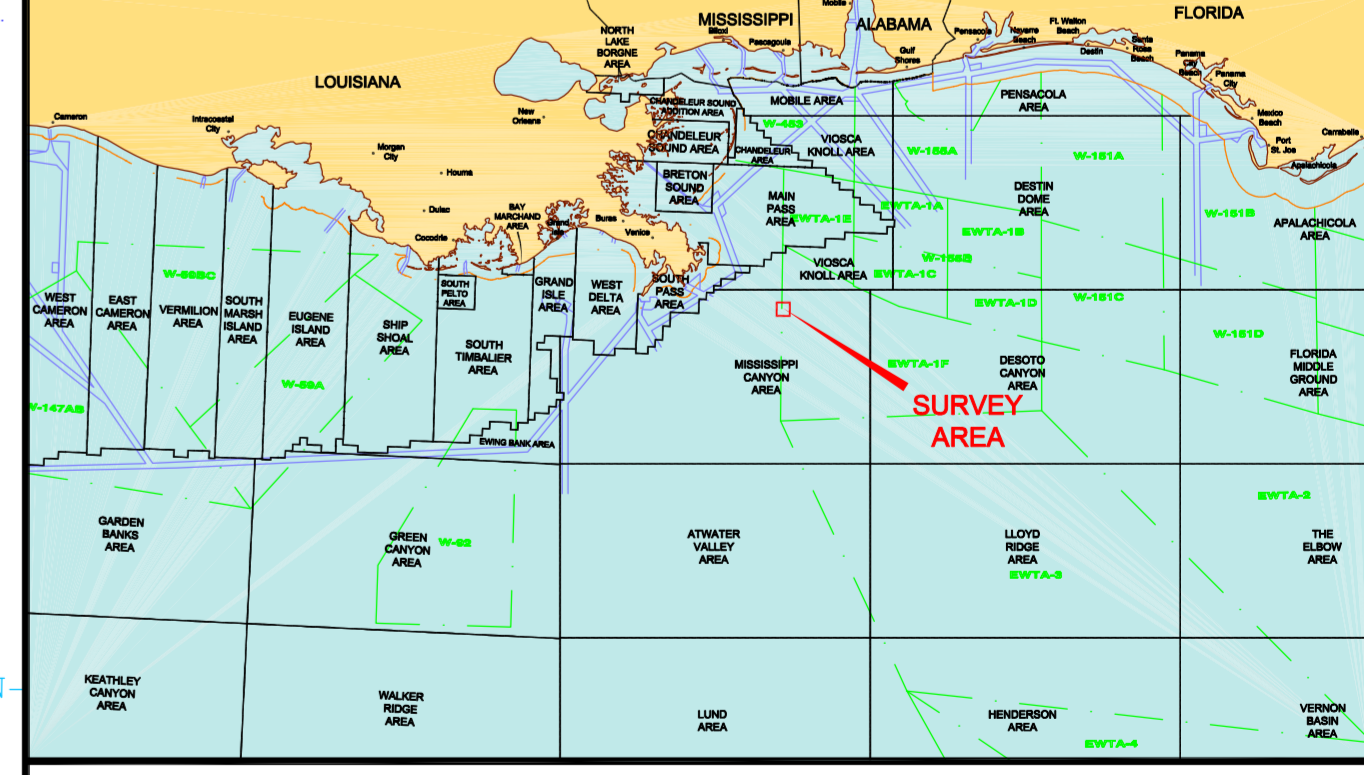


PLAN VIEW

C-Surveyor™ 1 navigation trackline, fix and fix number

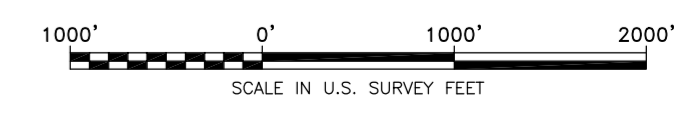


NOTE: All field data acquired April 30 - May 1, 2005
 Survey vessel: MV Rig Supporter, C-Surveyor 1
 NADCON version 2.1 utilized for WGS84-NAD27 conversions.



OleMiss THE UNIVERSITY OF MISSISSIPPI

NAVIGATION POST-PLOT MAP
 BLOCK STUDY
 BLOCK 118
 MISSISSIPPI CANYON AREA



ISSUE	DATE	DESCRIPTION	INTERP	DRAWN	CHECKED	APPROVED	ISSUE	DATE	DESCRIPTION	INTERP	DRAWN	CHECKED	APPROVED
1	05/12/2005	Preliminary	--	L. Kelly	D. Pierrotte	T. George							

GEODETIC DATUM: NAD27
 ELLIPSOID: CLARKE 1866
 GRID UNITS: U.S. SURVEY FEET
 PROJECTION: UNIVERSAL TRANSVERSE MERCATOR
 ZONE: 16N
 CENTRAL MERIDIAN: 87° 00' W
 FALSE EASTING: 1,640,416.67 ft. at C.M.
 FALSE NORTHING: 0.00 ft. at 00° 00' N

PREPARED BY: **C&C Technologies**
 SURVEY SERVICES
 201 L. ANDERSON BLVD., SUITE 100, LA 39307-2000

JOB NO. 7727-7970 DATE: May 12, 2005
 FILENAME: J:\7727-7970\7727.dwg

SHEET 1 of 1